

## 2006



2006 ( )	( )	%1.0	(*)	.1
		. %0.25	%5.6	2006 %2.5
%0.6	%0.3	2005		
	2006			
2006		%0.4	( )	%3.4
			( )	% 4.3
		2005		2006
		2005	%0.5	
			%0.8	2005
				2006
		2005		
2005	%9.5		%0.3	
	%8.2			
	2006 ( )			(*)
				2006

		2005	%0.3
			%0.5
			2006
1.27		1.21	
	2006	2006	%0.7
			%0.8
		2006	2006
2006			
		2006	%5.4
		%1.8	
	1.74	2006 ( )	
2006		( )	%2.5
		1.85	
	2006		
		:	.2
			.3
		:	
	( )		
	2006		
( )			
		117.5	
	2006		
		114.5	

:
:
:

2006  
%5.48  
%5.0

(<sub>2</sub>)

708.1 2006

20529.7 %3.6

2006 %0.111

19821.6 %0.355

2005

472.2 (<sub>1</sub>)

14500.3 %3.4

14028.1

2005

6029.4 235.9

5793.5 %2.81

2006

%70.6 (<sub>1</sub>)

%3.05

(<sub>2</sub>)

2006

. %29.4

9003.0

1263.2 118.4

%4.75 %4.61

2006

9676.8

2005 ( )

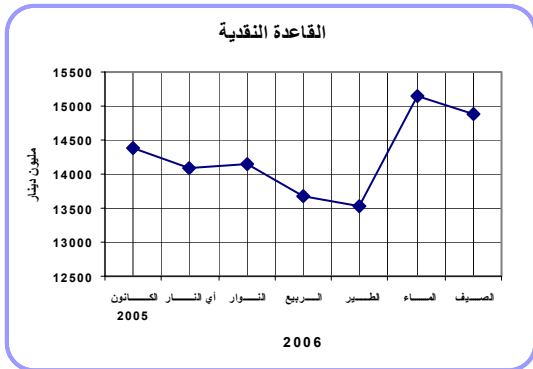
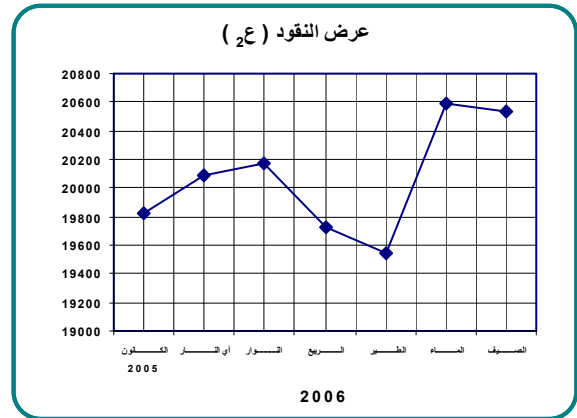
. %4.50 %4.75

2006 111.0 9042.8

2005 0.7

2006

. %2.8



:

14881.3 2006

493.4 14387.9 2005

. %3.4

:

799.9

685.2

10184.3

290.2

2006

3598.9

2006

1.315 %2.7

1.352 2006

2005

. %1.3

1.652 % 3.6 1179.7 8466.3

2006

( 2 )  
2006

%18.9

1.595

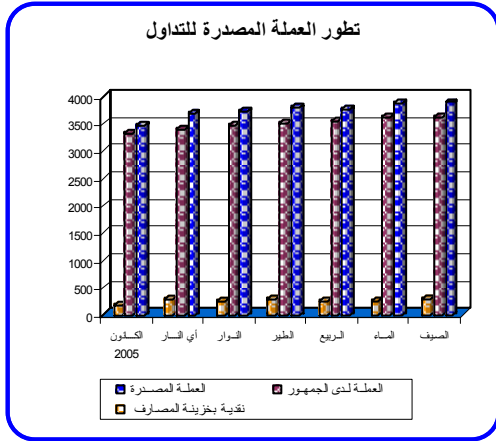
2005

%2.9

2.395

2.328

2005

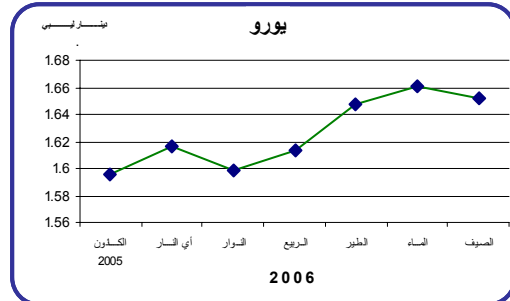


1.057

%2.7

1.029

2005



:

1201

2006

848

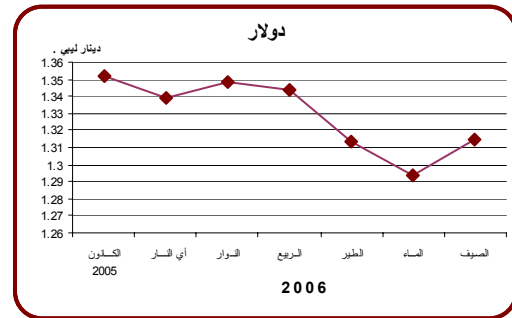
16191.1

11922.2

2005

353

4268.9



:

14059.2

13481.3

2005

2006

2006

(

3887.1

2005

3482.1

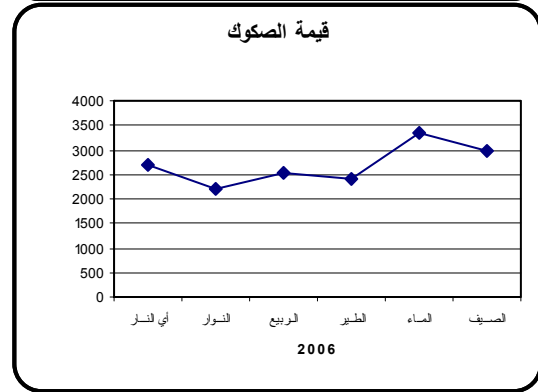
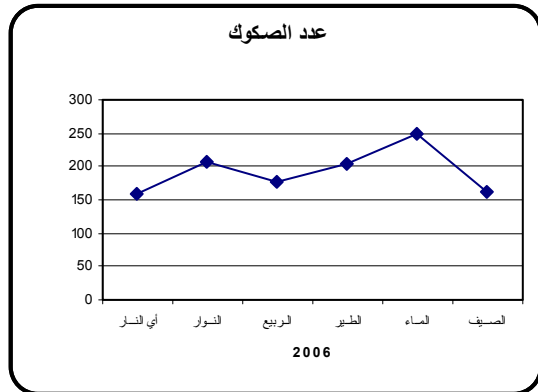
405.0

287.7

3598.9

:

	61938.2	2006
2005		53475.6
	8462.6	

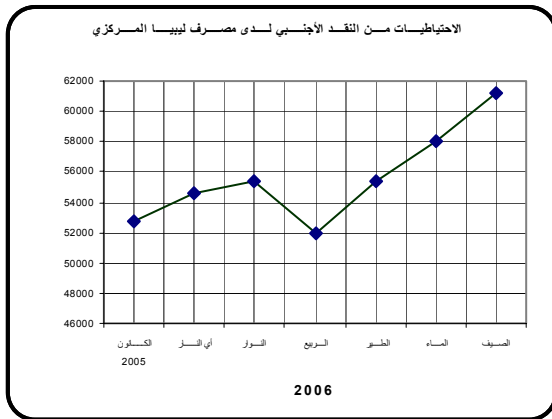


2006

70.0

(40)

:



.2

%15.0  
%7.5

2175.3      2006

1801.9

373.4

2006

21829.3

10183.3

2005

19795.4

8008.0

2033.9

. %10.3

2370.2	178.8	:	
%34.0		:	-
57.6		:	
1736.9	2006		1282.7
2005	1794.5		2006
			9203.6
			2005
			10486.3
			580.0
			2625.6
			2006
			2045.6
	1796.7		
16545.9	2006		
14749.2	2005		%79.8
1389.6			%18.1
2006			%2.1
11848.0			2006
%46.5			
%53.5			
407.1			
			229.2
	4697.9	2006	2006
			6980.5
			2005
			6751.3
	43.3		
	2006		
71.5	114.8		4610.3
	2005		%66.0
			50.4

( 9422.7  
651.7  
260.5 )  
1538.4

%8.1

%6.7

. %85.2

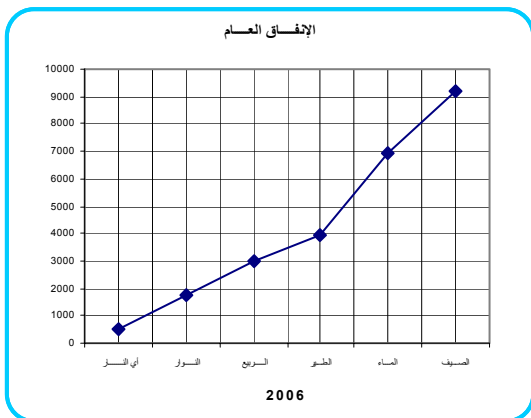
2005

2006

5307.7

9485.9

4178.2



2006

20.5

1156.0

2005

1135.5

%57.6

. %42.4

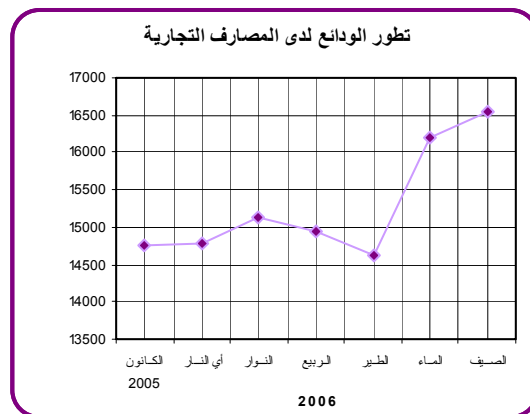
173.4

4012.6

2006

2005

3839.2



: .4

2006

314.4

1.723

1.669

304.6

2005

2006

24129.1

)

21678.5



252.6                      2006  
 1.384  
 1.328                      242.3  
 2005  
 .  
 47.44  
 63.96                      2005  
 2006

: .5

( 1999 )  
 %2.8                      2006  
 .                      2005  
 :  
 %4.1                      %13.3  
 %2.7  
 %2.4                      %2.0  
 . %0.1  
 %1.1  
 . %0.5

