

2004

=====

:

-1

7013.7 2004

27374.0 34387.7 %36.6

. 2003

7010.2

26405.2 33415.4

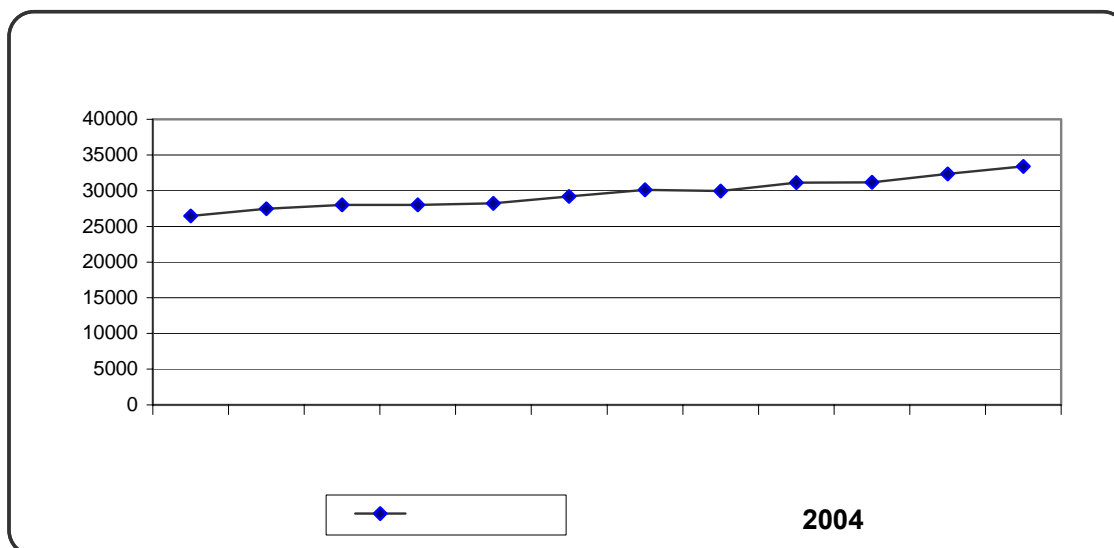
:

. 2003

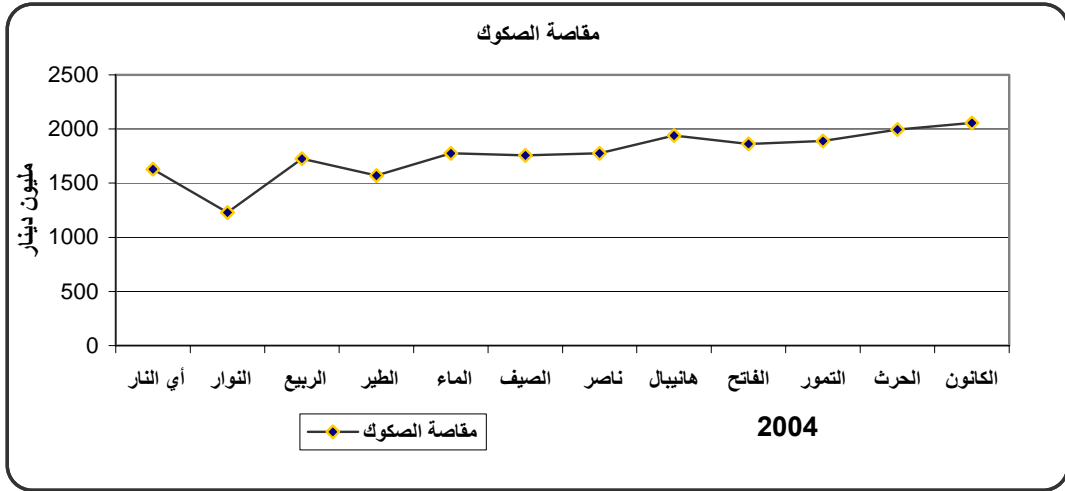
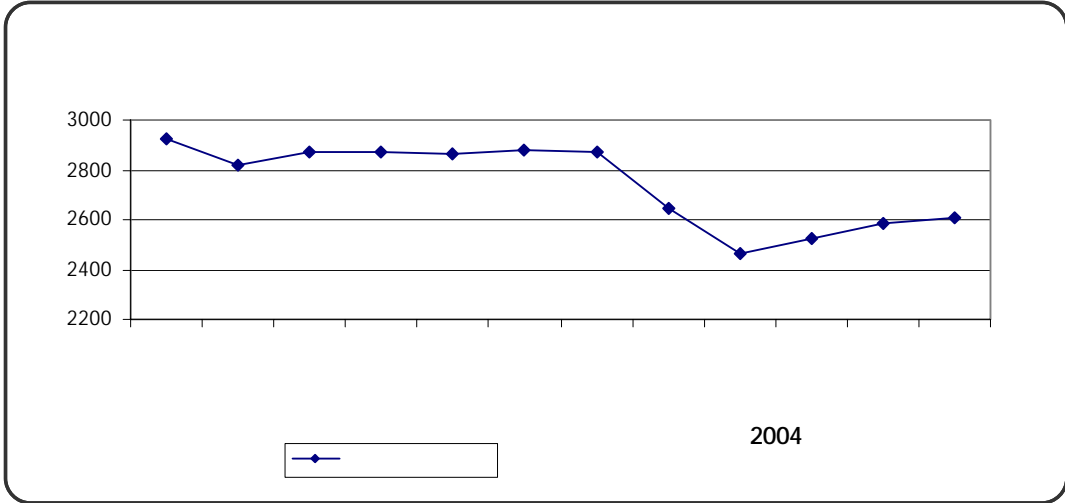
		(**)2004	2003	
26.5	7010.2	33415.4	26405.2	-: -1
26.1	6488.7	31336.1	24847.4	.
65.7	521.5	1315.0	793.5	.
0.0	0.0	764.3	764.3	.
0.4	3.5	972.3	968.8	(*) (. .) -2
26.6	7013.7	34387.7	27374.0	(2 + 1)

(*)

. 2004 (**)



2004	34	2003	26
2004	(2)		
			-2
	2004	()	
	2883.3	2794.7	88.6
			2003
2606.9	2004	156.6	
	2003	2763.5	
	19.1	()	
		2004	21.3
	%97.9		2003
			%2.1
(2)			
	2004	%17.0	2003
			%19.5



: -3

	9920.7	2004	
3138.4		2003	6782.3
			. %46.3
2906.2			
2838.4			67.8
	6386.7		
388.8			

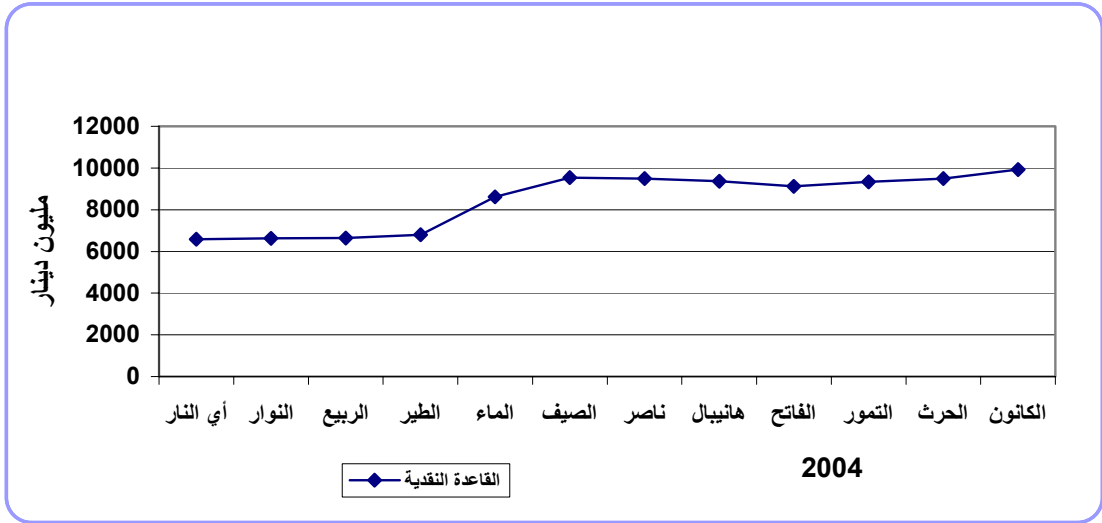
156.6

		(**) 2004	2003	
46.3	3138.4	9920.7	6782.3	:
5.7-	(156.6)	2606.9	2763.5	-
79.2	2906.2	6574.1	3667.9	:
56.7	67.8	187.4	119.6	-
80.0	2838.4	6386.7	3548.3	-
110.8	388.8	739.7	350.9	-
46.3	3138.4	9920.7	6782.3	:
28.1	6077.8	27737.8	21660.0	-
214.0	(12739.2)	(18691.1)	(5951.9)	-
96.5-	(27.9)	1.0	28.9	-
10.0	628.3	6923.3	6295.0	(*)
60.3-	9199.4	(6050.3)	(15249.7)	-

(*)

2004

(**)



12739.2

628.3

27.9

()

2003 %30.9

2004 %59.9

: -4

1249.1

2004 (2)

14051.8

15003.9 %8.9

2003

1462.1 (1)

1619.0

%68.6

2004

10491.6 (1)

()

(2)

4809.3

2004

213.3

(2)

%31.4

14578.8

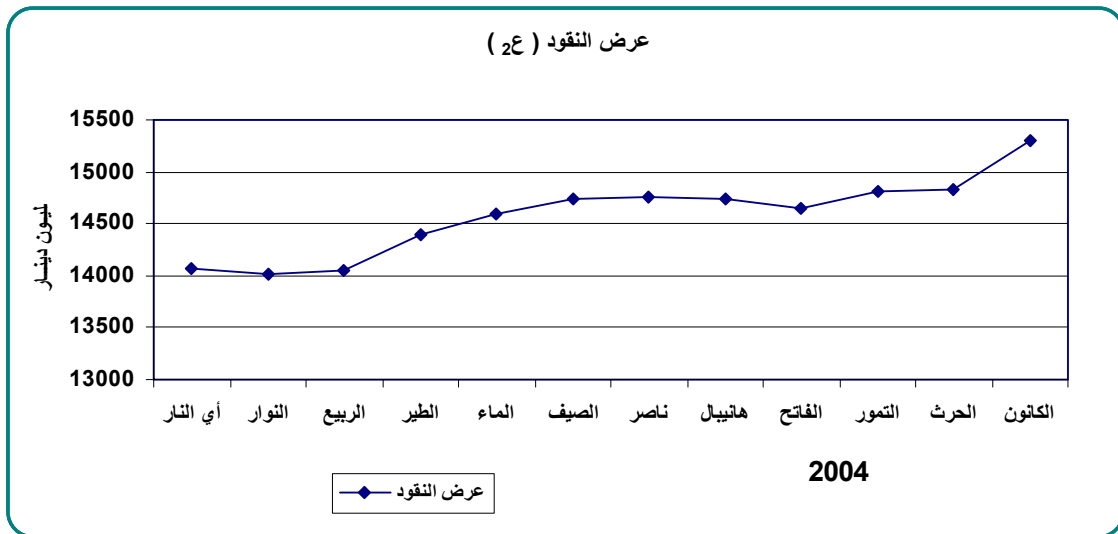
496.3

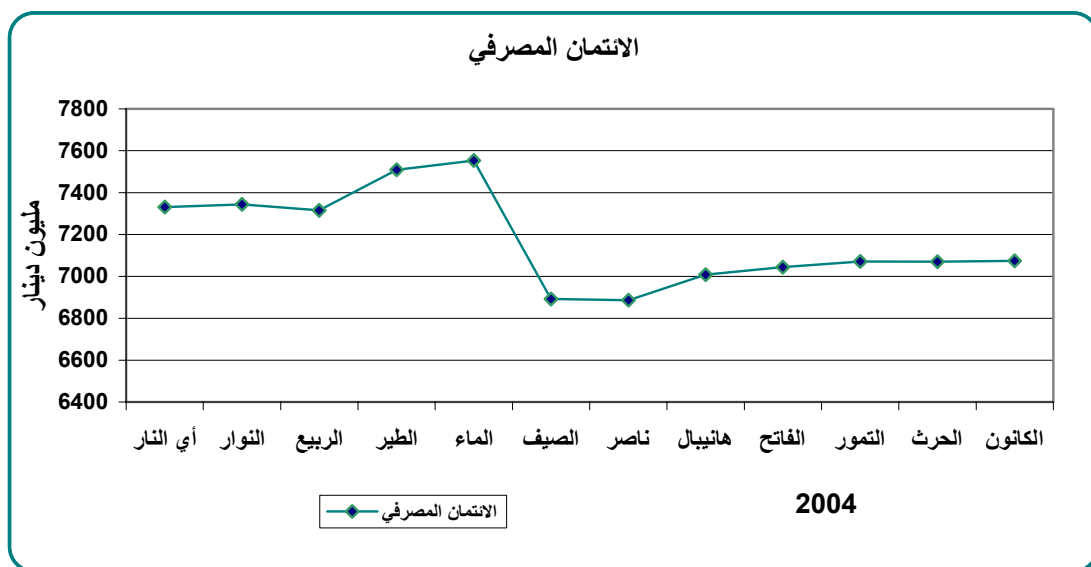
%		(**) 2004	2003	
16.2	1462.4	10491.6	9029.2	(1)
5.7-	(156.6)	2606.9	2763.5	-
25.8	1619.0	7884.7	6265.7	-
4.2-	(213.3)	4809.3	5022.6	:
3.1	77.2	2606.1	2528.9	-
11.6-	(290.5)	2203.2	2493.7	-
8.9	1249.1	15300.9	14051.8	(2)
32.5	6867.5	27999.1	21131.6	:
28.1	6077.8	27737.8	21660.0	-
139.5-	789.7	261.3	(528.4)	-
302.5	(14578.8)	(19398.4)	(4819.6)	:()
214.0	(12739.2)	(18691.1)	(5951.9)	-
162.5-	(1839.6)	(707.3)	1132.3	-
3.3	496.7	15352.3	14855.6	(*)
49.4	8463.7	(8652.1)	(17115.8)	.4

(*)

2004

(**)





-6

2004

2003

9805.1

11638.1

1592.0

1833.0

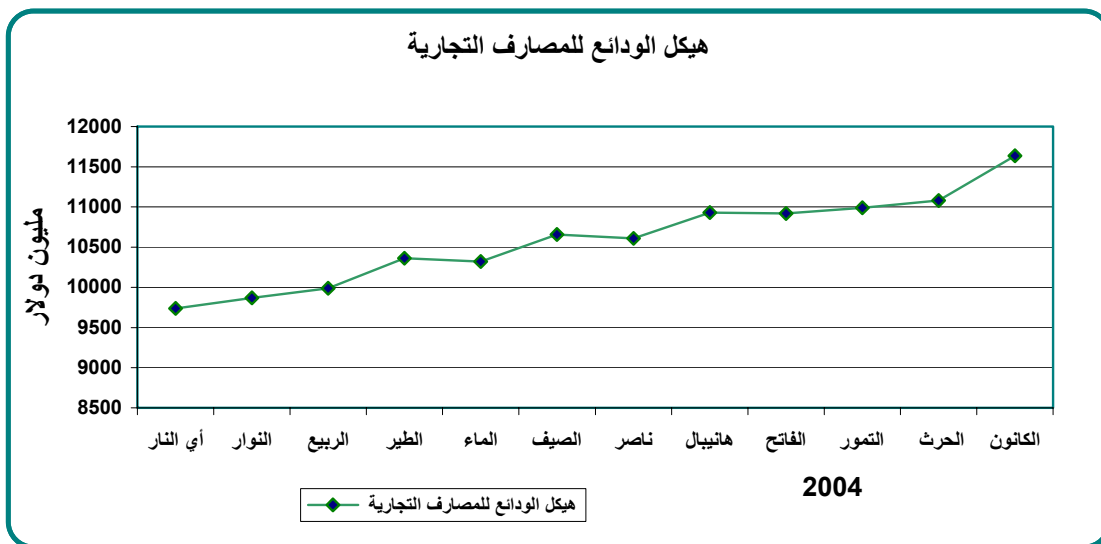
586.8

1005.2

		(*)2004	2003		
25.7	1592.0	7781.5	6189.5	:	.1
39.0	1005.2	3585.4	2580.2		-
16.3	586.8	4196.1	3609.3		-
3.1	56.3	1891.4	1835.1	:	.2
3.0	54.7	1867.4	1812.7		-
7.1	1.6	24.0	22.4		-
11.6	74.3	714.6	640.3	()	.3
14.4	50.3	399.0	348.7		.4
7.6	60.1	851.6	791.5		.5
18.7	1833.0	11638.1	9805.1		

2004

(*)



-7 :

2004

2004.2.17 2004 (6)

-:

- () -:

-:

.1 (%7.0) (%6.0) .

.2 (%7.5) (%6.5) .

.3 (%5.0) (%3.0) .

- () -:

.1 (%5.0) (20,000) .

.2 (%4.0) (20,000)

. (100,000)

.3 (100,000)

	. (%1.5)	10	.4
	. (%2.0)	(30 - 11)	.5
	(%2.5)	(89 - 31)	.6
	. (%3.0)	(180 -90)	.7
	. (%4.0)	(360-181)	.8
	(%4.5)		.9
			-: - ()
(2004) . 1372	(8)		-
	. (%5.0)	(%4.0)	
	-:		- ()
(2004) . 1372	(25)		-
			(%2.5)
		: 2004	-8
0.76621		2004	
		0.80159	%4.6
		2003	

2002)

: (2004 2003

(*)

1.26804	1.26172	0.87275	0.86839	1.94902	1.93930	1.21669	1.21063	2002
1.63496	1.62680	1.04839	1.04316	2.32357	2.31199	1.30839	1.30187	2003
1.70188	1.69339	1.10141	1.09591	2.40385	2.39186	1.25064	1.24440	2004

0.5175

(*)

: -9

2004

(16)

(405)

-:

2003

2004	2003	2004	2003	2004	2003	
60	60	12	12	48	48	
55	53	15	14	40	39	
72	72	12	12	60	60	
81	76	27	23	54	53	
45	42	7	4	38	38	
16	15	10	9	6	6	
62	62	14	14	48	48	
4	2	1	0	3	2	
7	5	6	4	1	1	
3	2	1	0	2	2	
405	389	105	92	300	297	

(11)

-:

-

2005

. 2008

-

-

-