

2006 1

:

:

-

:

2005

2005

.2006 17

(36370)

(38394)

(36760)"

"

(1) :

:

2005

Staff Report for the 2005 Article IV Consultation

2005

2006 1

2005	14	30		•
	()		.2005	
		.()	•
			.	
		2005	28	•
4	3	() 2		•
			2003	

2003	0.5175 =	1	2002	%15	•
					•
(PIN) "	"				•

5				
7				
8			2005	2004
8			2004	
12	2005			
16				
16				-
19				-
25				
26				
27				
28				
29				
30				
31				
32				-
21				-1
29			2004	-2
9			2006-1999	-1
10			2006-1999	-2
11			2006-1999	-3
12			2006-1999	-4
14	2005		- 1999	-5

18		2010-2005	-6
35	2003-1998		-1
36		2006-2001	-2
38		2006-2001	-3
40		2006-2001	-4
42		2010-2001	-5
44		2010-2001	-6
46			-1
49			-2
50			-3
55			-4

2005-2004

2005-2004

(1) :

(2)

(3)

"

" "

"

"

"

50

Exogenous) "

" "

"

(Shock Facility

" "

-1

1.

(%2)

2.

.(1)

2005 2004 -2

-3

2005

3.

2005 -4

2004 2003

%80

%97

%56

2005 -2000

1

2

" "

" "

"

3

"

" "

2005 - 2004

2004

2004

(%5.6)

(%31)

%4.5

.(1

2

)

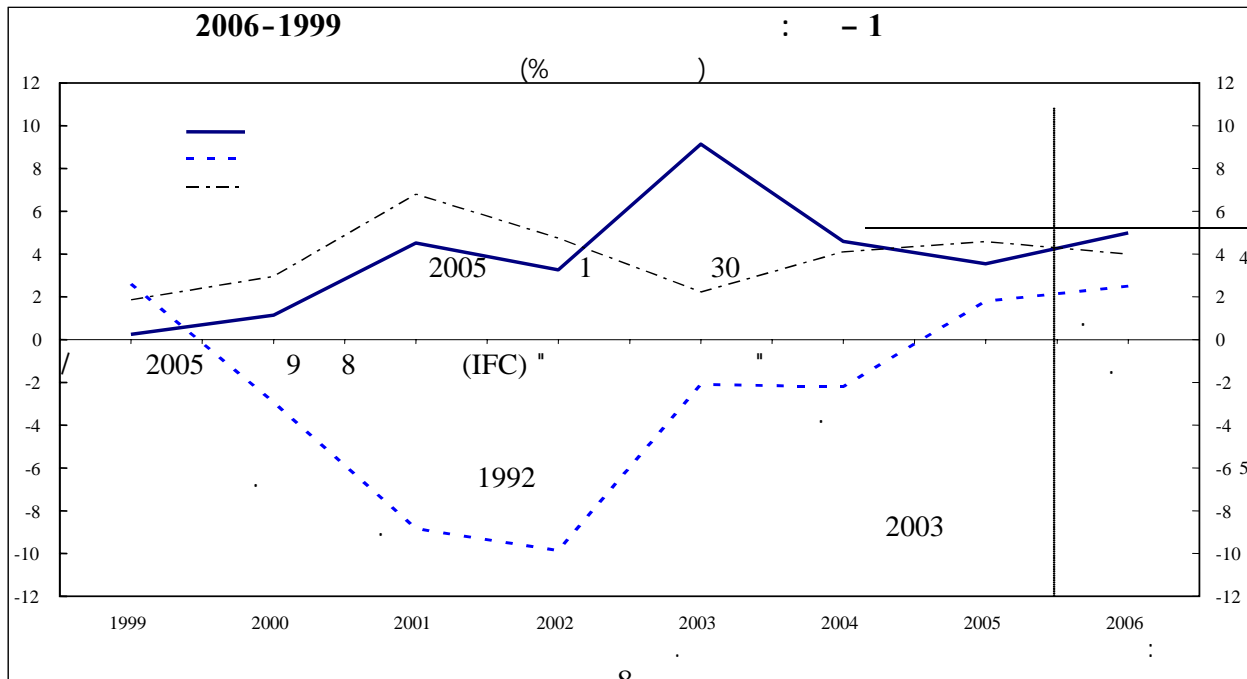
%4

-5)

%5

(%6

⁵.(2) %2.2



-7

%33.5

%17.5

.

(

%8)

6

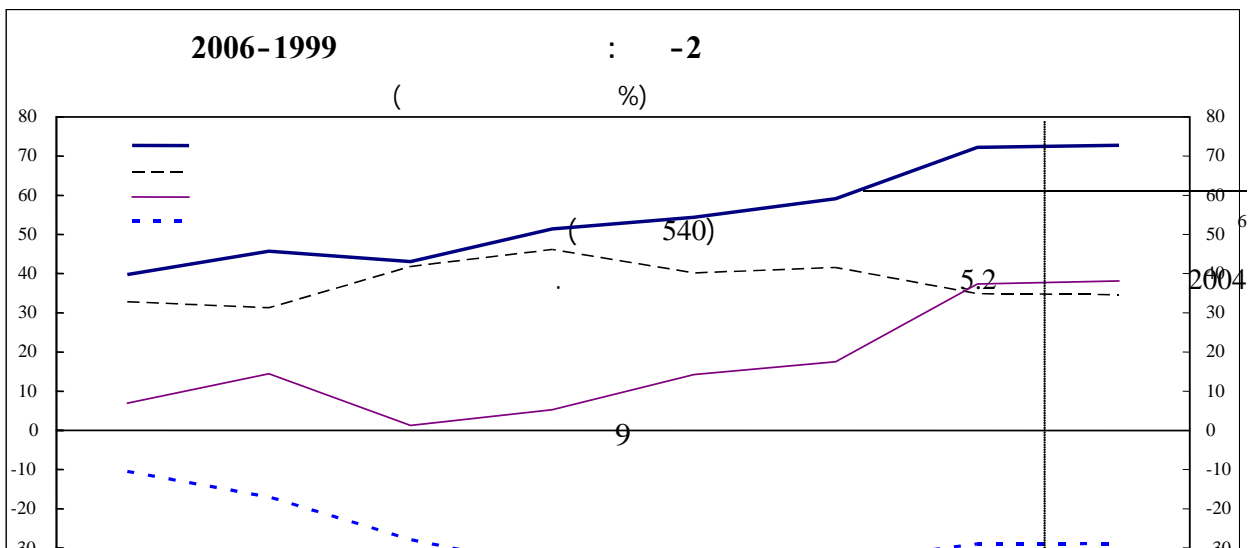
%0.5

(

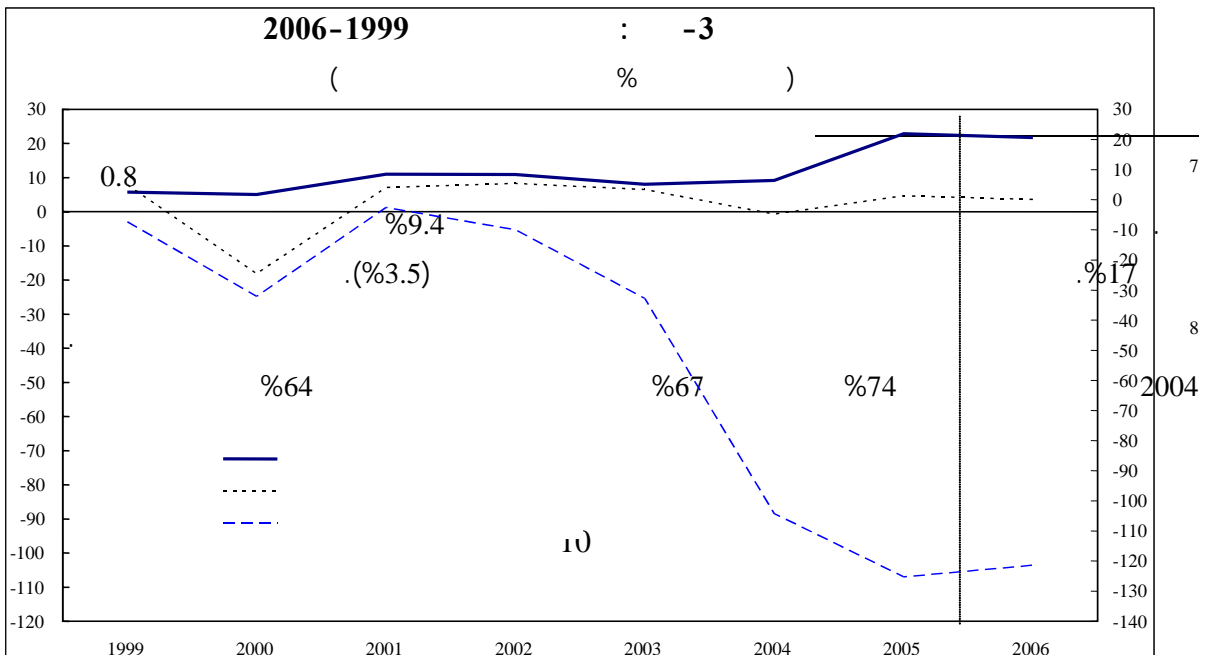
3)

.(2

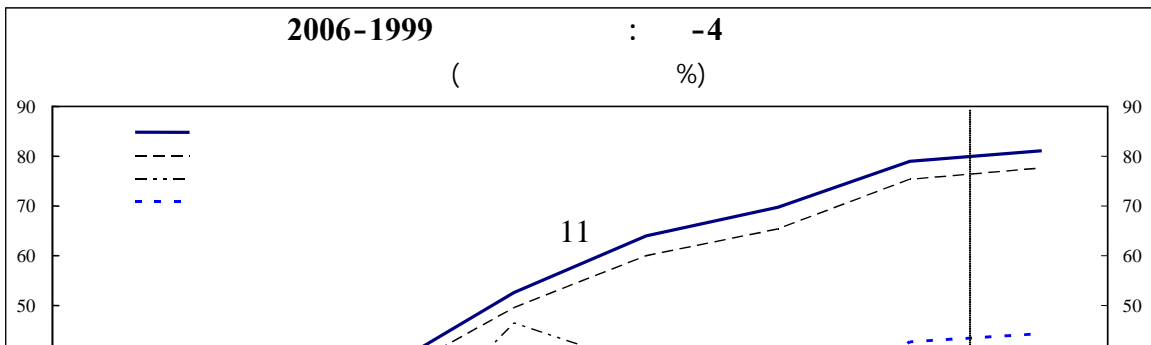
%51)



(3 4) %9.2 -8
 %50
 %1
 2003 %21 %28
 %4



20 %41 . %24 -9
5) 2005 8.8 %22 24 .(4



2005

	.2005		-10
%41	%32.5		%3.5
		.	
		%.2.5	1999
2005			-11
		.(%4.5)	
		.	%1.5
(%2.5)		.(%5)	(%7)
	.(%1.8)		
	%68		-12
		%15	

" "

9

(%25)

%33

10

%35

(%29)

-13

%20 %33

¹¹(%23)

12

%70

(%3)

13

-14

29

%48

2004

9

) 2005

(16

1.6

5.2

10

.2006

2005

(

%2.9)

%30.2

2004

11

%58

2005

12

.2004

%12

%17

2004

%50

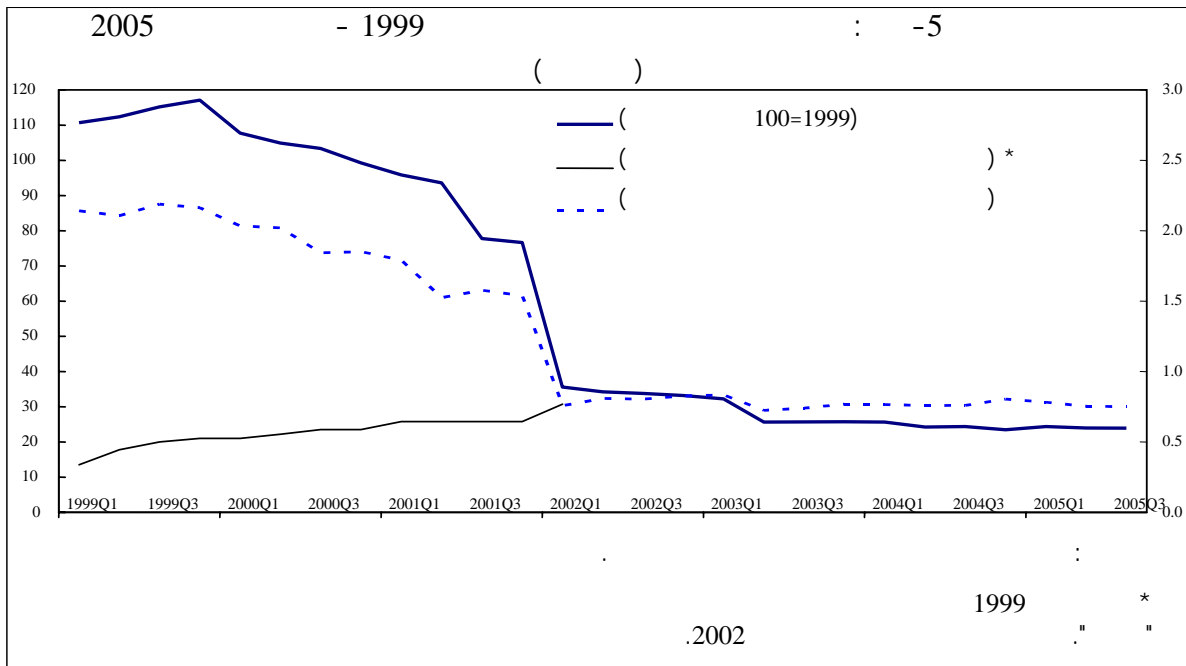
2005

13

%25

2005

2006 11 %24
 32
 2005-2004 2002 -15
 %4
 /
 .(5) %7



2005 -16
 %10) 17 31
 (%

%2

%50-25

.%4

14

(1) :

-17

(2)

2005

.(%4

)

250

%1.5-1

"

"

-18

one-stop) "

"

30

(window

5

144

216

15

66

-19

2005-2004

81

14

%4

%50-10

15

(" ")

-20

2005

/

-21

-22

-23

2010-2006

%7

%4.5

17

¹⁶.

%3.25

%4-3

%41 %35

.(6)

-24

15

%27 %22

¹⁷.(6)

-25

(%29)

.(%2)

¹⁸.(%4)

()

.2010

2.25

1.65

¹⁶

30

¹⁷

33

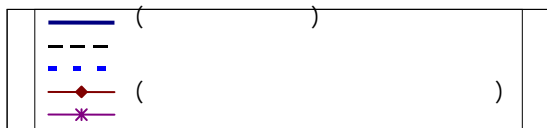
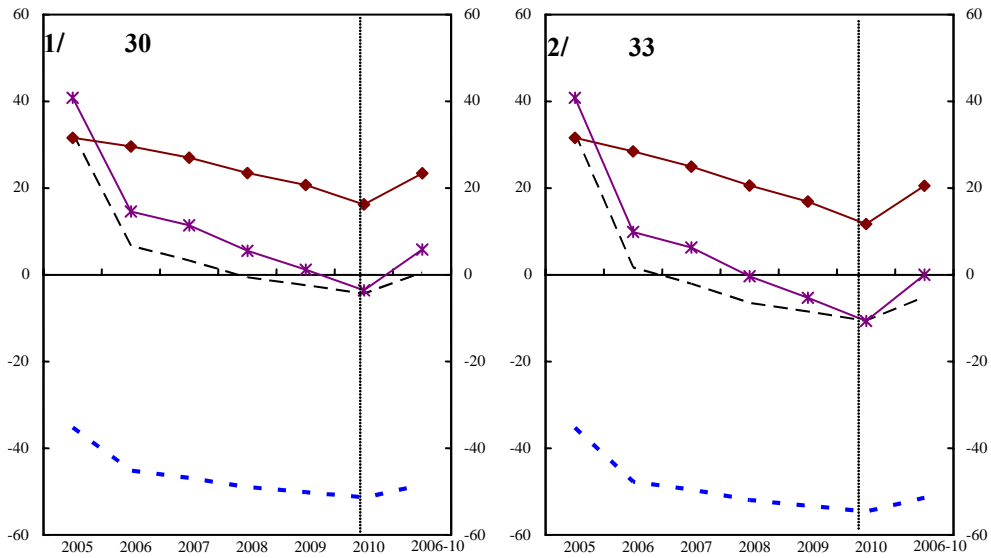
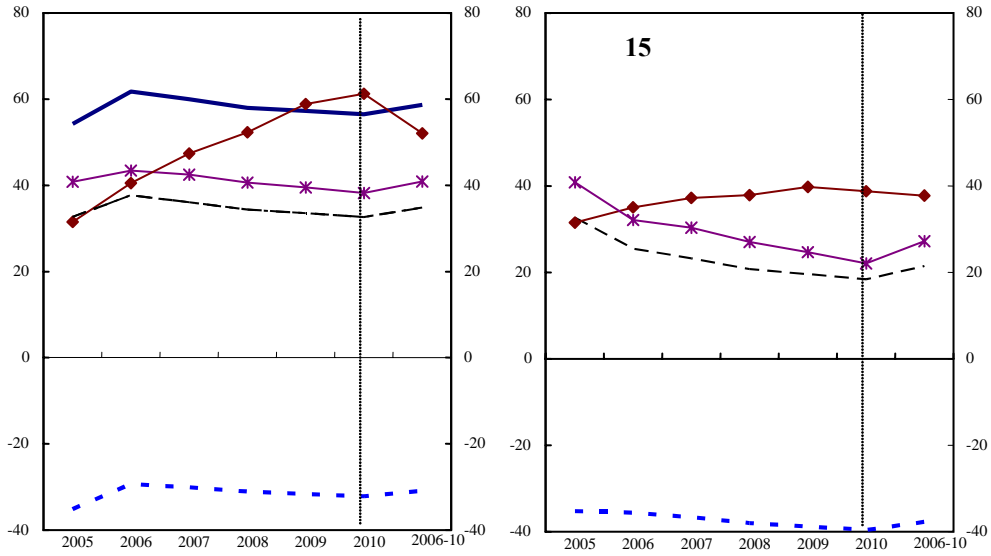
%1

¹⁸

%0.7

17

الشكل البياني 6- ليبيا: تحليل الحساسية، 2010-2005



1/
2/

-26

"

"

.(1)

-27

-28

19

.2006

-29

.2005

20

.(30)

3

19

20

2005 %5

%.25

%14

برنامج الإقراض الحكومي متعدد السنوات بقيمة

21

-30

مقدارها 3 مليارات دينار ليبي

22

2006

-31

.%17

23

(1)

(2)

%38 2006

24

%29

21

2005

22

.2005

(

%34)

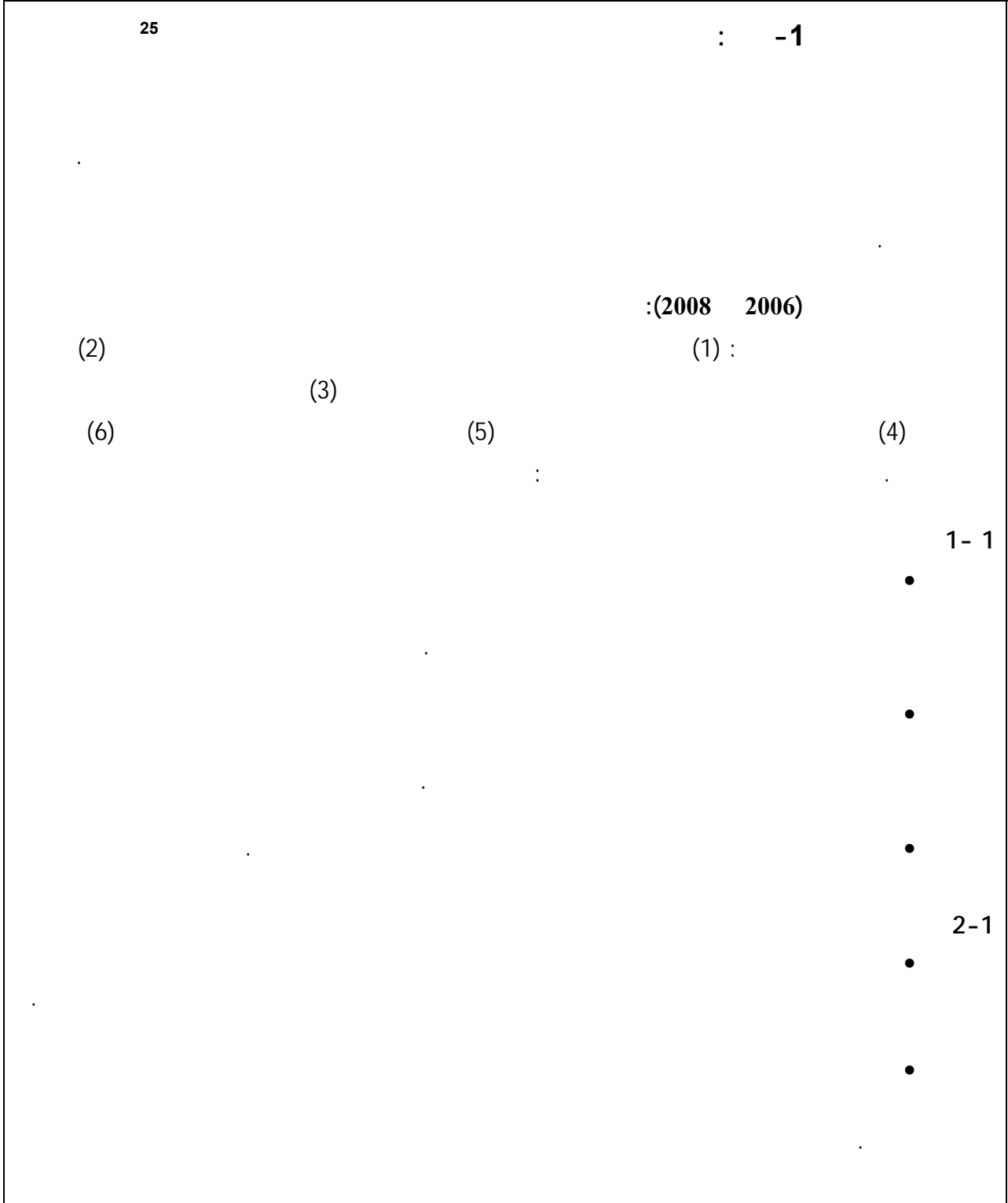
6.8

23

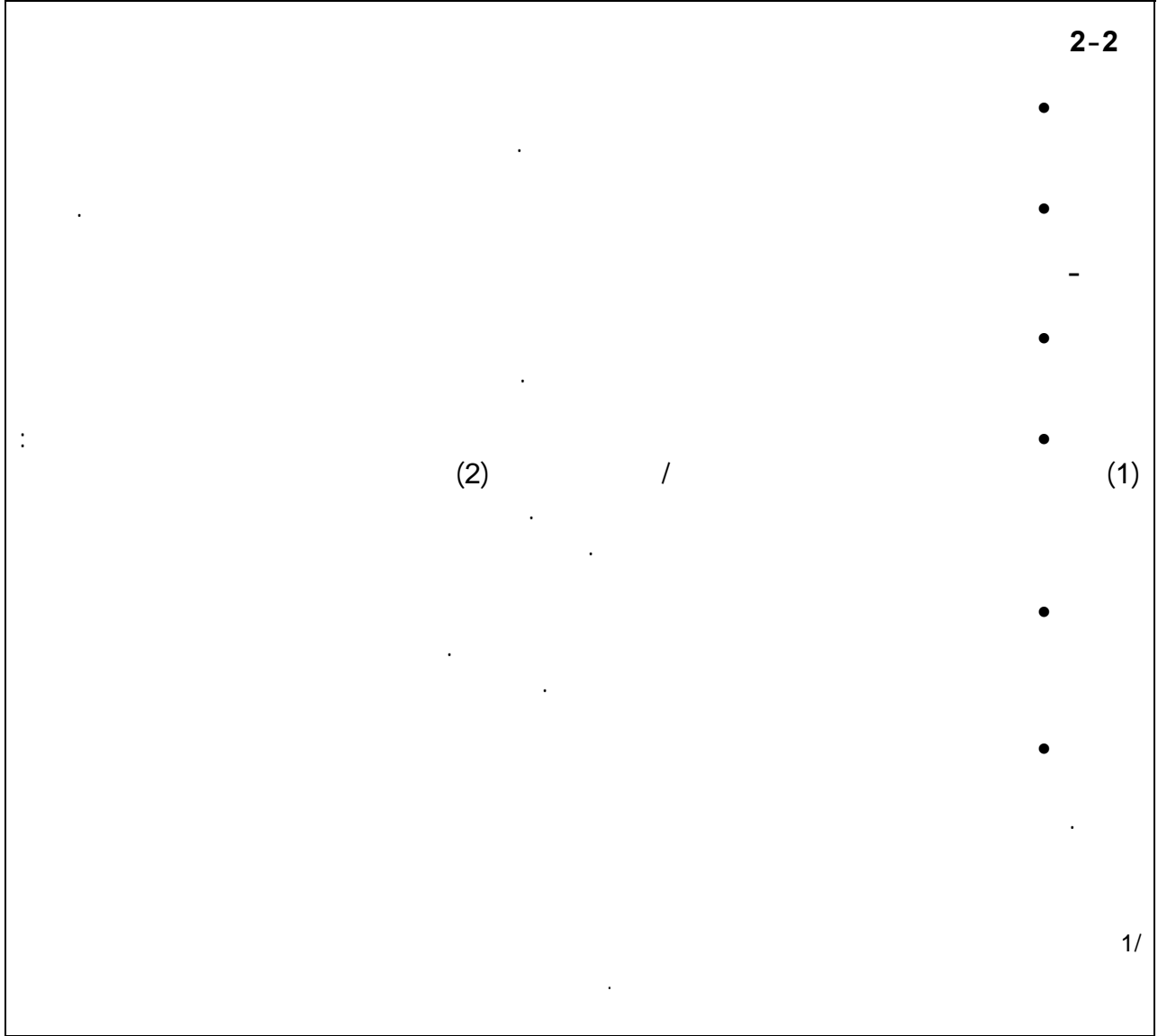
%30

24

%55



"	"	48 /	•
			•
			3-1
			•
			•
			•
			•
			•
		:(2010 2008)	•
(3)		(1) :	
		(2) ()	(4)
		1/ .	1-2



"

" " " "

26

27 "

"

28

29

- (1) :
- (2)

" " " " 26

450

27

28

SM/06/90

29

(3)

30

-34

-35

(METAC)

.2006

"

"

31

"

"

/

³².2005

"

"

33

%15

2005

12

SM/06/90

31

32

33

-39

4 3 ()2

-40

-41

34

%4

34

-42

"

"

35

-43

³⁶.(2)

-44

%22 2005

.2005

35

36

%2

-45

(1) :

-46

(2)

(3)

2004					: -2
1.5		39			
					1/.
		.%11		%59	
%45		%30			2004

2004	
%	
14.2	5581
6.5	2575
3.0	1194
2.2	850 ()
0.5	208 ()
0.8	323
7.6	3006
/ / 0.17 1/	

-47

(1) :

50

(3)

(2)

(4)

-48

(1) :

(2)

(3)

(4)

(GDDS) "

"

"

"

2006

37

-49

"

"

"

"

"

"

"

-50

(Exogenous Shocks Facility) "

-51

(2)

(1) :

-52

/

.1999

-53

-54

-55

.2004

-56

(SFF)

-57

" " "

-58

2005

-59

-60

-61

-62

50

-63

-64

-65

"

"

"

"

"

"

12

-66

2003-1998

: -1

1/	2003	2003	2002	2001	2000	1999	1998			
293.2	5.56	5.45	5.34	5.24	5.14	5.04				
35.4	32.5	33.0	33.5	33.9	38.4	39.2	%	14		
60.8	63.8	63.4	63.0	62.7	58.5	57.8	%	64	15	
3.8	3.7	3.6	3.5	3.4	3.1	3.0	%			65
0.67	0.57	0.58	0.59	0.60	0.62	0.64		2/		
72.4	88.5	88.2	87.9	87.6	87.2	86.7	%			
105.5	1.93	1.87	1.82	1.78	1.72	1.67				
72.9	75.3	75.8	76.2	76.6	77.1	77.6	%			
27.1	24.7	24.2	23.8	23.4	22.9	22.4	%			
71.0	72.7	72.3	...	71.5				
69.2	70.1	69.9	...	69.3				
72.9	75.3	74.9	...	73.8				
30.4	13.0	16.0	...	17.0	1 000			
94.7	91.0	91.0	93.0	92.0	92.0	92.0	%			
							12			
94.5	93.0	93.0	94.0	94.0	94.0	95.0	%	/	/	
							12			
3/ 76.6	...	81.7	80.8	79.9	78.8	77.8	%	15)		(
3/ 84.4	...	91.8	91.3	90.8	90.1	89.4	%			
3/ 68.1	...	70.7	69.3	68.1	66.5	65.0	%			
0.734	0.799	0.794	...	0.772	0.770	0.760		5/4/ (HDI)		
0.689	0.753	0.748	0.738				

6/5/ (GDI)

2005

2005

:

:(16)

1/

2/

.2002

3/

(HDI)

4/

.1

: 16

(GDI)

(HDI)

5/

(GDI)

6/

2006-2001

: -2

(1 123.7 =)
(2003) 5.6 :

2006	2005	2004	2003	2002	2001	
	(%)			
5.0	3.5	4.6	9.0	3.3	4.5	1/
4.0	4.6	4.1	2.2	4.7	6.8	2/ 1/
61.1	51.2	39.4	30.0	24.4	18.1	
45.0	39.2	30.2	23.4	19.2	30.0	3/
7.6	6.8	5.3	4.2	3.5	5.6	3/
3.0	2.5	2.2-	2.1-	9.9-	8.8-	
	(%)			
72.1	73.0	59.1	54.4	51.4	43.1	
67.0	67.8	51.2	47.4	40.4	29.1	:
34.4	41.2	44.0	44.6	41.2	44.3	
20.0	19.3	17.6	9.4	13.7	10.0	:
37.7	32.6	17.5	14.2	5.2	1.2	(-)
29.4-	35.3-	33.6-	33.1-	35.1-	27.9-	
108.3-	117.5-	95.9-	80.3-	72.1-	44.8-	%)
	(%)			
8.4	28.6	9.2	8.1	10.9	11.1	
114.5-	107.1-	104.2-	32.8-	10.0-	2.6-	
...	...	4.5	5.5	5.5	5.5	(%)
	(%)			
35.9	30.1	20.6	14.5	9.7	10.9	()
34.9	29.2	19.7	14.0	9.5	10.5	:
12.9	10.9	8.8	7.2	7.4	4.8	()
19.6	16.0	7.3	5.0	0.6	4.1	
43.4	40.8	24.2	21.5	2.9	13.8	(%)
17.2	13.6	6.1	3.1	0.3	1.3	(-)
38.1	34.8	20.4	13.3	1.6	4.5	(%)
56.4	39.3	25.6	19.5	15.0	14.1	
40.5	31.5	23.9	21.9	20.5	19.0	()

...	1.31	1.30	1.28	1.27	0.6	(.. / . .)	
...	1.36	1.24	1.30	1.21	0.7	(.. / . .)	
...	1.6	4/(.. / . .)	
...	2.5	.. / . .)	/	=
								(
1.750	1.643	1.620	1.534	1.200	1.316	()
60.0	53.7	36.9	28.2	24.4	23.3	(/)

2003

2002

.2002
1999

1/
2/
3/
4/

2006-2001

: -3

2006	2005	2004	2003	2002	2001	
				()	
44 022	37 433	23 272	16 336	12 572	7 814	
40 936	34 763	20 141	14 228	9 872	5 286	1/
23 553	17 337	9 225	4 583	2 549	1 719	:
3 086	2 671	3 131	2 108	2 700	2 528	2/
1 800	1 542	1 617	725	1 150	2 056	
507	397	309	...	506	381	
603	517	602	385	379	1 531	
690	628	705	...	266	143	
1 011	877	1 222	962	944	179	
276	251	292	421	606	294	
21 022	21 107	17 332	13 396	10 063	8 038	
21 022	18 319	17 231	13 396	10 063	8 038	
8 799	8 420	10 298	10 564	6 724	6 226	
7 799	7 072	5 611	4 228	4 183	3 537	
6 696	6 022	4 780	3 499	3 684	3 161	
4 721	4 455	3 577	2 812	2 546	2 297	
1 975	1 567	1 202	688	1 139	863	
					75	
1 103	1 050	832	728	499	301	
1 000	981	894	
	368	3 792	6 336	2 541	2 689	
	368	3 792	5 636	1 966	2 193	3/
...	700	575	496	
12 223	9 899	6 933	2 832	3 339	1 813	
11 342	9 073	6 135	2 204	2 936	1 539	
882	826	798	628	403	274	
	2 788	102				
	357-	961-	1 333-	1 229	447-	4/
23 000	16 683	6 901	4 273	1 280	223	
553-	654-	2 324-	310-	1 269-	1 495-)
						(
17 936-	18 079-	13 240-	9 955-	8 592-	5 063-	
23 000-	16 683-	6 901-	4 273-	1 280-	223-	
22 600-	16 191-	6 654-	4 207-	1 134-	213-	
400-	492-	247-	66-	147-	10-	

	(%)			
72.1	73.0	59.1	54.4	51.4	43.1	
67.0	67.8	51.2	47.4	40.4	29.1	1/
5.1	5.2	8.0	7.0	11.0	13.9	2/
34.4	41.2	44.0	44.6	41.2	44.3	
34.4	35.7	43.8	44.6	41.2	44.3	
14.4	16.4	26.2	35.2	27.5	34.3	:
7.7	8.7	9.1	9.4	10.4	12.7	
1.8	2.0	2.1	2.4	2.0	1.7	
20.0	19.3	17.6	9.4	13.7	10.0	
33.0	33.4	32.1	21.4	29.1	28.0	
1.4	1.6	9.2	18.7	17.1	13.9	
0.0	5.4	0.3	0.0	0.0	0.0	
0.0	0.7-	2.4-	4.4-	5.0	2.5-	

1.388

2004 2003

1/

2/

3/

1.404

4/

()

1/ 2006-2001 : -4

2006	2005	2004	2003	2002	2001	
		()			
79 702	56 423	34 237	27 123	19 123	9 976	
77 726	54 448	33 066	26 573	18 440	9 410	
77 741	54 460	33 073	26 578	18 444	9 414	
15	12	7	5	4	4	
1 976	1 976	1 171	550	683	566	
2 047	2 047	1 321	794	778	623	
72	72	141	244	94	57	
58 311-	36 684-	18 893-	13 071-	6 119-	1 745	
48 625-	26 998-	11 253-	3 486	6 899	7 092	
58 502-	35 902-	19 465-	4 820-	555-	616	
828	828	828	7 012	7 010	7 151	2/
58 493	35 893	19 519	12 964	8 587	7 765	
373	373	373	1 811	1 811	1 811	2/
1 210	1 210	1 147	678	788	582	
9 877	8 903	8 212	8 305	7 453	6 477	
4 791	4 278	3 477	3 784	2 838	1 831	
						2/
5 033	4 573	4 452	4 298	4 438	4 492	
45	45	67	77	82	78	
7	7	215	146	96	76	
9 686-	9 686-	7 640-	16 557-	13 018-	5 347-	2/()
21 391	19 739	15 344	14 052	13 004	11 721	
...	13 968	10 537	9 029	8 705	7 704	
...	3 311	2 613	2 764	2 614	2 560	
...	10 657	7 924	6 266	6 092	5 144	()
...	5 771	4 807	5 023	4 299	4 018	
						:
57 729-	35 129-	18 938-	4 284-	77-	1 057	

		(%)			
8.4	28.6	9.2	8.1	10.9	11.1	
...	32.6	16.7	3.7	13.0	3.6	
...	20.1	4.3-	16.8	7.0	28.7	
62.9	84.4	303.9	769.0	190.1-	30.6-	
12.0	23.0	8.1-	33.3	55.0	40.8	
	(%)	
117.9	144.6	50.6	61.5	78.0	20.9	
109.6-	102.6-	104.9-	26.2-	1.7-	4.6	
114.5-	107.1-	104.2-	32.8-	10.0-	2.6-	
4.9	4.5	0.7-	6.6	8.3	7.1	
2.6	5.2	2.2-	7.3	8.6	5.0	
2.3	0.8	1.1	1.1-	0.5-	2.0	
	((%)			
79.6-	52.7-	28.6-	11.6	28.2	39.1	
95.8-	70.1-	49.5-	16.0-	2.3-	3.4	
35.0	38.5	39.0	46.8	53.2	64.6	
61.1	51.2	39.4	30.0	24.4	18.1)
						(

1/

2/

2004

2010-2001 : **-5**
()

2010	2009	2008	2007	2006	2005	2004	2003	2002	2001	
21 261	20 719	20 088	20 053	19 552	15 985	7 303	5 036	566	4.145	-1
20 899	20 911	20 783	21 305	21 538	17 758	10 355	6 170	1 172	5.217	-
23 058	22 872	22 567	22 929	23 019	19 234	11 832	7 325	2 309	6.067	-
43 383	41 019	38 769	37 396	35 935	30 110	20 600	14 525	9 717	10.892	()
42 008	39 749	37 596	36 311	34 936	29 210	19 723	14 037	9 534	10.472	1/
1 375	1 269	1 174	1 084	1 000	900	877	489	184	420	
20 325-	18 147-	16 203-	14 467-	12 917-	10 875-	8 768-	7 200-	7 408-	4.825-	()
2 622-	2 319-	2 050-	1 833-	1 648-	1 378-	1 271-	950-	626-	752-	:
2 159-	1 961-	1 784-	1 624-	1 480-	1 476-	1 477-	1 155-	1 137-	850-	-
3 071	2 768	2 497	2 256	2 039	1 970	1 914	1 597	1 539	1.033	
912	807	714	631	558	494	437	442	402	183	
1 524-	1 361-	1 215-	1 085-	969-	816-	658-	540-	343-	263-	
476-	456-	437-	418-	400-	381-	368-	352-	628-	494-	
122-	109-	98-	89-	80-	68-	85-	104-	83-	169-	
58	56	53	51	49	47	45	43	190-	209-	()
95-	91-	86-	83-	80-	70-	134-	202-	100-	79-	()
69-	66-	62-	60-	58-	48-	33-	23-	23-	49-	:
1 357	766	226	361-	726-	870-	543-	540	265	240-	-
3 629-	3 445-	3 268-	3 172-	2 894-	2 551-	1 634-	845-	585-	747-	2/
4 986	4 211	3 494	2 812	2 167	1 681	1 091	1 385	850	507	
4 822	4 053	3 343	2 667	2 029	1 549	966	1 263	740	414	
165	158	151	145	139	132	125	122	110	93	
996-	958-	921-	891-	1 260-	903-	2 509-	1 673-	872-	832-	-
				400-	115-	1 741-	1 174-			3/
996-	958-	921-	891-	860-	788-	768-	499-	872-	832-	
372-	352-	333-	322-	310-	259-	210-	156-	105-	127-	
623-	605-	588-	569-	550-	529-	558-	343-	767-	705-)

										(
3 395-	3 110-	2 850-	2 613-	2 396-	2 349-	1 023-	167-	89	976-		-2
2 244-	2 040-	1 855-	1 686-	1 533-	1 503-	643-	79	281	308-		
555-	529-	503-	479-	457-	448-	187-	607-	72	1.358-		
696-	542-	492-	448-	407-	399-	193-	361	264-	690		
						134-	1 748-	341-	1.831-		-3
17 866	17 608	17 238	17 440	17 156	13 636	6 146	3 122	314	1.338		-4
17 866	17 608	17 238	17 440	17 156	13 636	6 146-	3 122-	314-	1.338-		-5
1.36	1.36	1.36	1.36	1.36	1.31	1.30	1.28	1.27	0.61	. / .	:
1.36	1.36	1.36	1.36	1.36	1.36	1.24	1.30	1.21	0.65	. / .	()
126.57	108.70	91.09	73.85	56.41	39.26	25.62	19.5	15.0	14.1		()
61.24	58.84	52.26	47.39	40.48	31.50	23.94	21.9	20.5	19.0	()
38.19	39.50	40.64	42.44	43.44	40.82	24.21	21.5	2.9	13.8	(%)
32.09	33.57	34.88	36.91	38.11	34.82	20.38	13.3	1.6	4.5	(%)
55.67	52.45	49.43	47.25	45.01	39.16	30.16	23.4	19.2	30.0	()
										(
										:	
						1.080	1.076			2004 2003	1/ 2/ 3/

2010-2001 : -6

2010	2009	2008	2007	2006	2005	2004	2003	2002	2001
				()					
2.25	2.12	1.99	1.86	1.75	1.64	1.62	1.53	1.20	1.32
)
42.0	39.7	37.6	36.3	34.9	29.2	19.7	14.0	9.5	10.5
)
54.9	55.7	56.4	58.3	60.0	53.7	36.9	28.2	24.4	23.3
)
)
									(2004
			(%)			
1.36	1.36	1.36	1.36	1.36	1.36	1.24	1.30	1.21	0.65
) . / .
									(
1.36	1.36	1.36	1.36	1.36	1.31	1.30	1.28	1.27	0.61
) . / .
									()
3.5	3.5	3.5	3.5	3.0	2.5	2.2-	2.1-	9.9-	8.8-
									(%)
1.2	1.3	0.3-	0.1-	13.6	29.3	25.5	16.0	31.5	0.1
)
									(%)
22.2	21.4	20.7	19.7	18.8	18.3	15.3	10.0	34.2	12.3
2.2	2.1	2.0	1.9	1.8	2.0	1.7	2.0	22.5	2.2
20.1	19.4	18.7	17.8	16.9	16.4	13.6	8.1	11.7	10.1
60.4	60.9	61.3	62.1	62.2	59.2	39.5	31.5	37.2	26.1
4.1	4.6	4.9	5.1	4.5	2.5	6.5	12.3	13.2	17.4
56.3	56.4	56.4	57.0	57.7	56.6	33.0	19.2	23.9	8.8
38.2	39.5	40.6	42.4	43.4	40.8	24.3	21.5	2.9	13.8
1.9	2.5	2.9	3.2	2.7	0.6	4.8	10.4	9.3-	15.2
36.3	37.0	37.7	39.3	40.7	40.3	19.4	11.2	12.2	1.4-

4.4	4.3	4.4	4.6	5.0	3.5	4.6	9.1	3.3	4.5	
										(%)
3.0	3.0	3.2	3.5	4.0	4.6	4.1	2.2	4.7	6.8	
										(%)
71.0	71.0	71.1	71.5	72.1	73.0	59.1	54.4	51.4	43.1	:
64.9	65.1	65.4	66.2	67.0	67.8	51.2	47.4	40.4	29.1	
38.3	37.5	36.7	35.5	34.4	41.2	44.0	44.6	41.2	44.3	
14.6	14.7	14.7	14.5	14.4	16.4	26.2	35.2	27.5	34.3	
23.7	22.9	22.1	21.0	20.0	19.3	17.6	9.4	13.7	10.0	
32.6	33.5	34.3	36.1	37.7	32.6	17.5	14.2	5.2	1.2	
2.3-	1.9-	1.6-	1.2-	0.9-	1.3-	5.9-	1.0-	5.2-	8.2-)
										(
32.2-	31.6-	31.1-	30.0-	29.4-	35.3-	33.6-	33.1-	35.1-	27.9-	(-)
			()				
43 383	41 019	38 769	37 396	35 935	30 110	20 600	14 525	9 717	10 892	: " "
1 375	1 269	1 174	1 084	1 000	900	877	489	184	420	
20 325-	18 147-	16 203-	14 467-	12 917-	10 875-	8 768-	7 200-	7 408-	4 825-	
21 261	20 719	20 088	20 053	19 552	15 985	7 303	5 036	566	4 145	
38.2	39.5	40.6	42.4	43.4	40.8	24.2	21.5	2.9	13.8	(%)
126 566	108 700	91 092	73 854	56 414	39 259	25 623	19 493	15 029	14 139	
61.2	58.8	52.3	47.4	40.5	31.5	23.9	21.9	20.5	19.0)
										(

-

2003

4 3 ()2

-

2005

12

.(SM/05/3)

.2005

14 - 30

-

:1985 -1

:1985 -2

:1990 -3

:1998 -4

:2001 -5

:2003 -6

.(

:2004 -7

:2004 -8

:2005 -9

:2005 -10

.()

.
:2005 -11
:2005 / -12
.()
-13
.(2005)

(2006 1)

1961	1958	1958	-1
		.1993	
		1960	
2004	:	"	-2
		"	
2004	.		
		2005	-3
	2006		

:

(1) :

(3)

(2)

(4)

(3- 27 9-4) 2005

"

"

.2005

.1968

2004

2002

"

"

2004

.2003

2005

(1) :
(2)

(3)

1993

(4) 10 6

(5)

(6)

(7)

)

)

(

.(

) 1993 - 1992

2000

1999

(1988

.2003

.

2005

(1) :

)

(2)

(3) (

(5)

(4)

(6)

.(

)

"

"

(1) :

2005

(2)

(3)

(4)

)

(5) (

)

(ORF)

"

(

/

(6) "

(7)

(8)

(9)

/

(1) :

2005

(2)

(3)

(4)

2001

2000

(3)

(5)

(2)

(4)

(1) :

(1) :

2005

)

(2) (.

()

/

(3)

(4)

"

"

(1) :

(2)

()

()

/

(3)

(4)

(5)

:

(2006 15)

			2006/1	2006/1	
			2006/1	2005/11	1/
			2006/2	2005 /12	/
			2006/2	2005 /12	
			2006/2	2005 /12	
			2006/2	2005 /12	
			2006/2	2005 /12	2/
			2005 /12	2005 /12	
			2006/2	2005 /12	4/ - 3/
			2006/2	2005 /12	-3/
			2006/2	2005 /12	5/
			2005 /12	2004	
			2005 /12	2004	
				2004	/
			2000/11	2000/11	

- 1/
- 2/
- 3/
- 4/
- 5/

()



International Monetary Fund
 700 19th Street, NW
 Washington, D. C. 20431 USA

....

2006 17

38

2004 2003

%2)

(

(%31)

2004

(%4.5)

.(%5.6)

.(%2.2-)

%24

.2005

24

%33.5

%17.5

%0.5

(

%8)

.%9.2

%50

%1

.2005

.(%2.5)

%3.5

.(%4.5)

%1.5

(%7)

(%2.5)

.(%5)

.(%1.8)

%32.5

.(

)

(

%68)

%15

"

"

%35

.(%29)

%20 %33

.(%23)

%70

(%3)

%41

29

%48

11

%24

.2006

32

2005

17

31

(

%

%10)

%50-25

%.%4

%.%2

(1) :

(2)

2005

.(%4

)

250

"

"

30

(one-stop window) "

"

216

5

66

144

2005-2004

(" ")

2004-2000

:

(1 123.7 =)
 (2004) 5.67 :
 (2004) 5.271 :

2005	2004	2003	2002	2001
(%)				
3.5	4.6	9.1	3.3	4.5
4.6	4.1	2.2	4.7	6.8
2.5	2.2-	2.1-	9.9-	8.8-
(%)				
73.0	59.1	54.4	51.4	43.1
41.2	44.0	44.6	41.2	44.3
0.7-	2.4-	4.4-	5.0	2.5-
32.6	17.5	14.2	5.2	1.2
35.3-	33.6-	33.1-	35.1-	27.9-
(-)				
(%)				
28.6	9.2	8.1	10.9	11.1
4.5	4.5	5.5	5.5	5.5
(%)				
()				
30.1	20.6	14.5	9.7	10.9
10.9	8.8	7.2	7.4	4.8
16.0	7.3	5.0	0.6	4.1
40.8	24.2	21.5	2.9	13.8
39.3	25.6	19.5	15.0	14.1
31.5	23.9	21.9	20.5	19.0
(%)				
()				

2/

2/